

MAHARASHTRA SOCIAL HOUSING AND ACTION LEAGUE



Maharashtra Social Housing and Action League

MASHAL

ANNUAL REPORT APRIL 2021 – MARCH 2022

CONTENTS

Message from the President.....	2
Projects Implemented	
Mapping Activities:	
1. Slum Atlas 2.0.....	3
Climate Change:	
2. C Balance-Thermal Comfort Project.....	5
3. Initiatives on the route of <i>Wari</i>	6
Social Development:	
4. CORE Vaccination Work.....	8
5. COVID Relief Work 2.0.....	8
6. Global Opportunity Youth Network.....	9
7. Housing Support Services.....	9
8. Livelihood Project.....	10
9. Samruddhi Program for Holistic Development.....	10
Government Programs and Entitlements:	
10. Haqdarshak Empowerment Solutions Pvt. Ltd.....	12
11. Pradhan Mantri Awas Yojana-Gramin.....	12
12. Empowerment of Transgender Population.....	13
Internships.....	14
Organogram.....	15
Governing Council.....	15
Internal Audit Report.....	16
Obituaries.....	16
Press Releases.....	17
About MASHAL.....	18

MESSAGE FROM THE PRESIDENT

On behalf of the Governing Council members and staff, we seek to reassure our well-wishers, beneficiaries, project partners, collaborators and donors of our resolve to remain steadfast with the vision and mission that the founding members enshrined in the memorandum of association. The sudden demise of Vice President Ashok Kulkarni and Sharad Mahajan, Executive Director and founder member early in the year created a vacuum and a brief period of uncertainty. A reflective and responsible Governing Council stood strong during the crisis and ensured that the organization remains steadfast on the commitment made to its supporters and donors.

During the year MASHAL, once again kept the poor, vulnerable and the slum dwellers at the center of its work by piloting the COVID vaccination outreach with support from **CORE** (a US-based crisis response organization), **Pune Municipal Corporation** and **Milind Deora Foundation**. The pilot project succeeded in promoting COVID appropriate behavior, providing COVID monitoring material and catalyzing vaccination drives for 10,000 families living in 36 slums in Hadapsar ward. **Salaam Pune**, a magazine published by the widely read Anubhav group dedicated its monthly feature to the initiative. Ten to twelve thousand copies of which were distributed across the slums of Pune along with a widespread dissemination through social media such as facebook, YouTube and twitter. The pilot achieved its purpose of showcasing a model that is effective, airtight, and that can be scaled in order to enable local bodies and allied entities to better manage the pandemic especially keeping in mind the poor and marginalized communities.

MASHAL has been a forerunner in utilizing geographical Information systems (GIS) based biometric economic surveys. This year we upgraded the Slum Atlas version 1. In undertaking the Slum Atlas Version 2, it adopted state of art drone technology in order to ensure accuracy and speed of collecting data. We hope that the new version of the Slum Atlas will help create network of learning and support within neighborhoods of up-gradation, relocation and rehabilitation of communities. It will also serve as an important information base to refine and strengthen city wide information systems and knowledge about city wide community development approaches in India, besides serving as a feedback system for monitoring CSR, government and bilateral funding organization interventions.

Besides the above two flagship initiatives, the organization has invested time, resources and expertise in strengthening the management, social and environmental conservation aspects of the *Wari* Routes in the state of Maharashtra. Its efforts have been acknowledged and appreciated by the diverse set of stakeholders associated with the *Wari*.

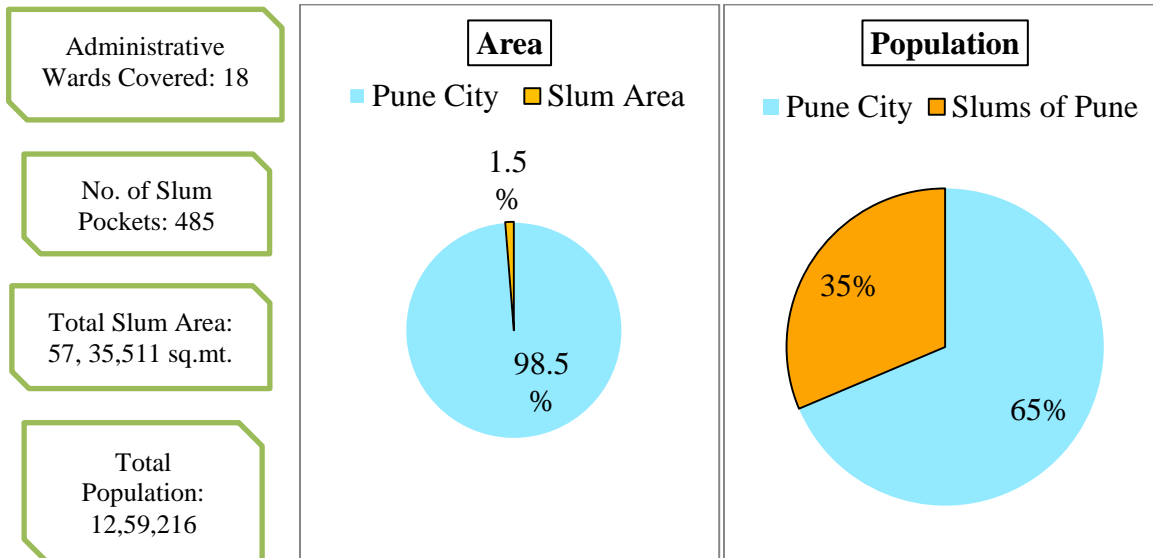
In continuation of its efforts at meaningfully contributing to climate change efforts, MASHAL also provided field support to the informal housing thermal comfort project and incubated a few roof and wall material designs that could be adapted by the informal housing sector.

Our strength remains our zealous team of field workers, the young professionals who lend their skills to the development sector instead of choosing mainstream employment opportunities and our strong and committed Governing Council members and funding partners who believe in our work and allow flexibility of working that innovative projects need. Our efforts to pursue meaningful and purposeful work will continue. We also hope to expand our resource base and look forward to your continued support.

PROJECTS IMPLEMENTED

SLUM ATLAS 2.0

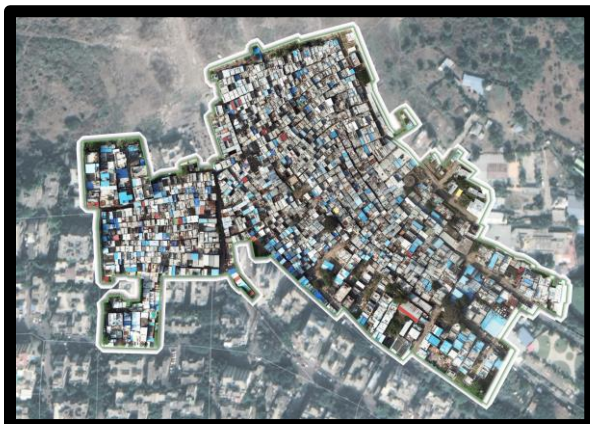
This project was a continuation of the Slum Atlas Project implemented by MASHAL in the year 2007-2011. The mapping and survey of all the slum pockets has been strengthened using drones for aerial photography.



Data was collected and analyzed under following heads:

Hut No.	Floors	Name of HH Head	House/Shop	Individual Toilet	Individual Tap Connection
Individual Gas Connection	Gas Connection	Aadhar Card	Ration Card	Mobile No.	Remarks

Drone Image of Kishkindhanagar Slum



Contributors of Slum Atlas 2.0

Organization	Amount (Rs.)
MASHAL	7.5 lakh
SPARC	5 lakh
Pune Lighthouse	5 lakh
Yardi CSR	30 lakh
TOTAL	47.5 lakh

Slum Atlas 2.0 was implemented in association with Yardi Software India Private Limited with following objectives:

1. Mapping and survey of pre-identified slum pockets in Pune city using drone technology.
2. Create Autocad final map and GIS integrated map with attached Attribute Table.
3. Create system for easy availability of the data for other NGOs and Govt. agencies.

Slum Atlas 2.0 will prove helpful to the Government, ULB, NGOs, and Slum Dwellers etc. It will be useful for:

1. Recovering taxes and providing various services to the slum dwellers.
2. Creating registry for PMC
3. Mapping and surveying the slums
4. Analyzing the status in the slums
5. Identifying target audience for microfinance institutes
6. Providing data to NGOs for upliftment of slum dwellers
7. Disaster risk reduction and response

Slum Atlas 1.0 was released by the then Chief Minister, Shri. Prithviraj Chavan

It provided valuable inputs to the smart city officials in offering spatial and demographic details of the slum population living in the city



It served as an important resource in executing the Lighthouse Project initiated under the aegis of the Smart City Mission

MASHAL conducted a Smart City Survey in Pune and published a report in the form of a Smart City Book

AIMS

Tracing the smart city proposal of Pune city and its journey so far-along with the larger context of smart city discourse.

Presenting citizen's evaluation of the Pune's Smart City project

Bringing together some valuable perspectives that contextualize the logic behind the smart city policy to develop a robust understanding of the broader issues that should inform, both, the experience and the direction smart urbanism need to take.

OBJECTIVE

To present a basis for an informed debate on the implementation of the project and bring the stake holders – policy makers, agencies involved in implementation as also the users-citizens themselves – together where a conversation would be possible over what is achieved, what needs to be achieved and above all, what needs to be imagined if we are talking of a city of tomorrow.

MASHAL made a presentation to the CM office regarding improving the housing conditions of slum dwellers in Pune

C BALANCE – THERMAL COMFORT PROJECT

C Balance Solutions Pvt. Ltd. is a knowledge-centric social enterprise rooted in sufficiency and social equity. It builds tools to reduce carbon footprint, and bridge the gap between climate-crisis knowledge and action by hand holding collectives into integrating the climate-emergency and climate-justice into their actions.

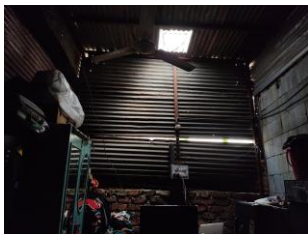
Alufoil/ Bubble Wrap Green Roof System Water-filled PET-bottles



Dormer Window



Wood Wool Panel



Few designs proposed to reduce the heat in the households of the socio-economically deprived settlements

The ‘Informal Housing Thermal Comfort Project’ aimed at working towards both, climate crisis adaptation and mitigation with a focus on thermal comfort, through engagement with communities inhabiting informal settlements who are among those most vulnerable to injustices propagated by human induced climate change, with support from other stakeholders.

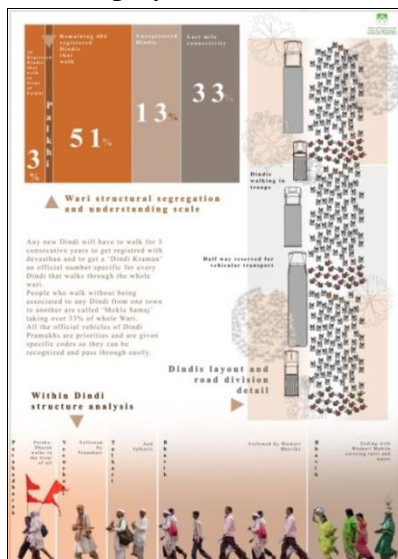
MASHAL organized the workshops of the beneficiaries. A total of 35 beneficiaries were selected from Shinde Vasti of Hadapsar for a workshop of this project. They were briefed about the work of C Balance in the area of climate crisis adaptation and thermal comfort along with the research conducted by the organization to find out a solution on the problems created by the excessive heat. The beneficiaries face problems such as headache, vomiting, fainting, rashes and sores in summer while roof leakage, water stagnation, mosquitoes and insects in rainy season. Then, they were explained how the roof designs prepared by C Balance work to reduce the heat in the house and that initially five houses will be installed with these roof sheets and the temperature will be documented regularly. They were also told that these sheets will be modified if needed and then the beneficiaries will be consulted before their installation.

INITIATIVES ON THE ROUTE OF WARI

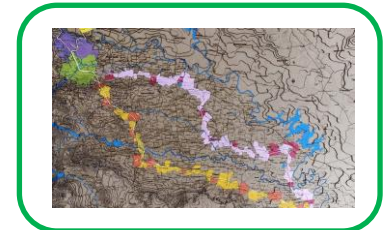
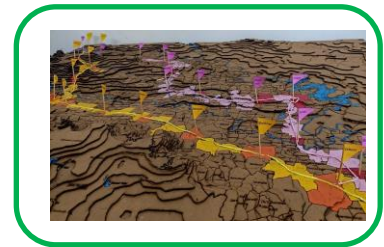
The ‘*Warakari Sampradaya*’, one of the oldest *Sampradayas* of Maharashtra is predominantly known by its yearly ritual called ‘*Pandharichi Wari*’ i.e. pilgrimage to Pandharpura to meet God Vitthala on the day of *Aashadhi Ekadashi*. Thousands and lakhs of *Warakaris* walk to the Pandharapura along with the *Padukas* (the auspicious footwear) of the ‘*sants*’ (saints of the *Sampradaya*) installed in the ‘*Palkhis*’ and thus the procession is also called as *Palkhi Sohala*. *Palkhis* with *Padukas* of various saints of *Sampradaya* also join *Wari* from all over Maharashtra. Sant Dnyaneshwara Maharaj Palkhi Sohala starts from Alandi and that of Sant Tukarama Maharaj starts from Dehu. NHAI has already started the widening of these two routes.

Various state departments and local authorities of GoM take coordinated actions to facilitate smooth conduct of this procession. There is a need to amalgamate the proficient administrative process of *Wari* which would lead us towards competent social, cultural and environmental constructions which could be owned by the masses through the conservation of the set of traditional values.

In the light of the same, MASHAL has been engaged in the study of practical issues along the *Palkhi* routes and addressing them through collective engagement of and partnerships with local communities, stake holders and government agencies. As a part of this research, MASHAL has prepared 3-D models of the *Palkhi* routes of Sant Tukaram Maharaj Palkhi Sohala and Sant Dnyaneshwar Maharaj Palkhi Sohala. A ceremony was arranged on 30th December 2021 to hand over these models at the hands of Mr. Rajesh Titar (Head of the Pilgrimage Dept. of Divisional Commissioner Office, Pune) to the temple trusts of Dehu and Alandi to display them in the respective temples. MASHAL also prepared few panels based on the same research which also were displayed in the exhibition.



Officials from Dehu Temple Trust discussing over the Palkhi Route Model at the Exhibition



Palkhi Route Models

Along with the research, a Rapid Assessment Survey has been undertaken in nine villages located on the routes of Sant Dnyaneshwara Maharaj Palkhi Sohala and Sant Tukarama Maharaj Palkhi Sohala.

Palkhi Sohala Route	Villages
Sant Dnyaneshwar Maharaj Palkhi Sohala	Taradgaon, Barad, Malshiras and Velapur
Sant Tukaram Maharaj Palkhi Sohala	Baramati, Anthurne, Sarati and Pirachi Kuroli
Wakhari is the village where all the Palkhis converge before proceeding to Pandharpura.	

In the preliminary assessment it has been realized that the interventions are required to be planned from the perspectives of both, the *Warakaris* and the villages that host the *Wari* as people in these villages open their homes to pilgrims and voluntarily extend hospitality along with food and accommodation. The cultural and social spirit embedded within these villages is so deep rooted, that the villagers serve and contribute with utmost devotion even when they know the risk to their own health and hygiene. Thus, MASHAL has recognized the needs of more infrastructures, better facilities and adept management and addressing the demands of *Warakaris* as well as of the villagers. Based on the preliminary assessment, MASHAL has identified a few specific challenges and would like to propose specific initiatives to ease the hardships faced by the villagers and to provide improved services to the *Warakaris*:

1. Geo Spatial Mapping of the Villages
2. Solid Waste Management in the villages
3. Pre-stressed Precast Concrete Pavement (PPCP) Roads in the Villages

Aim of these initiatives is to preserve the environment and to improve the health and hygiene of the villagers and to better serve the pilgrims during their stay in the village. The objectives are:

- a. Create a base map to facilitate the overall development of the villages
- b. Plan and implement a solid waste management system for the villages
- c. Design and facilitate construction of PPCP roads in the villages

***MASHAL proposes to implement this project in two villages –
Barad and Pirachi Kuroli.***

Water Diary Project

Water Diary Project was implemented in association of Helmholtz-Zentrum für Umweltforschung GmbH (UFZ), a research organization from Germany. A survey was conducted to better understand the water situation and migration in slum communities of Pune.

It aimed at to learn how much water is required for these people and when with the objective suggesting recommendations for improved supply systems in these areas. In 1st phase of the project socio-economic survey of 50 Household in 4 different locations in Pune was carried out to understand the types of the houses and their accessibility of water. In 2nd phase the households were asked to fill up a water diary for a week which included documentation of water collection, use and quality.

CORE VACCINATION WORK

CORE (Community Organized Relief Effort), is a US-based crisis response organization. MASHAL in collaboration with CORE arranged the COVID Vaccination Work program. **The objective was to facilitate and mobilize the slum dwellers to take vaccinations offered through Pune Municipal Corporation.** It reached out to 10,000 families living in 36 slums in Hadapsar ward of Pune city for COVID vaccination. Vaccination drive started on 31 July 2021 in the slum area of Hadapsar. Villo Punawala Charity Hospital of Hadapsar was the vaccination center.



Door to door visits were carried out to -

- Register people on COWIN portal and
- Provide them with receipts to avail the vaccines at the vaccination center.

Free transport was provided to the beneficiaries.

COVID RELIEF WORK 2.0

‘MASHAL COVID Relief Work 2.0’ started experimentally under ‘COVID Appropriate Behavior’ project which was launched jointly by MASHAL and CORE.

Objectives:

1. To impart proper knowledge about the project to Residential Community Volunteers (RCVs).
2. To make RCVs aware about the Medical Safety Kit (CORONA KAVACH) as they will be going door-to-door to distribute it.
3. To provide help to slum dwelling families to access COVID management kits.

MASHAL prepared 10,000 CORONA KAVACH and distributed them in 36 slums of Hadapsar ward, Janta Vasahat and red light areas where the number of positive cases was high.

Distribution of
CORONA
KAVACH



CORONA KAVACH included Oxymeter, Thermometer and other 12 essential medical items

GLOBAL OPPORTUNITY YOUTH NETWORK

The project aimed at geo tagging of the ward wise survey of Pune Municipal Corporation (PMC). Global Opportunity Youth Network (GOYN) believes that working with a solid base of data enables communities to consider and design solutions appropriate to the scale of the problem by addressing systematic challenges. MASHAL started discussions with GOYN regarding the maps and uses of GIS integration technology for management benefits. These discussions then turned into projects where MASHAL mapped all the citywide 3000 centers who work with GOYN and presented them with ward wise segregated maps. After this, MASHAL and GOYN started working together for the surveys of potential youth who needs livelihood support. MASHAL completed 7500 such surveys from almost 14 different wards of PMC. Later, GOYN processed this data and sent the list of entries to be worked on by MASHAL for geo tagging.

*Meetings of the
officials of GOYN →
and MASHAL*



HOUSING SUPPORT SERVICES

The project was implemented in collaboration with Annapurna Microfinance Institution and Habitat for Humanity. It aimed at the facilitation of the unorganized settlements in Pune slums with housing support services focusing the areas where Annapurna Pariwar would be operating at.

Objectives:

1. To lobby advocacy to get Pradhann Mantri Awas Yojana.
2. To facilitate and support accessing microfinance for the low-income communities which shall be utilised for Housing and Livelihood programmes.
3. To improve housing conditions and provide technical assistance to optimize livability & dignity, including construction of new houses in clusters.
4. To conduct joint action-based research in the first phase of the Housing Support Services project to support 100 Households initially, such that it's implemented in the field-level, and policies and practices be formulated based on the action research.

Although the Housing Support Services project at Pune needs to be subsequently scaled to support up to 7500 member families of Annapurna Pariwar, sustainable revenue generation has to be planned to meet the expenditures.

LIVELIHOOD PROJECT

Habitat for Humanity works to create a concrete difference in the lives of families especially from deprived socio-economic backgrounds by working with sectors such as community, public, private and civic. Livelihood Project aimed especially at the empowerment of the women. MASHAL was an implementation partner for this project.

Aim: To empower women with a sustainable solution in generating income amidst job losses along with holistic awareness creation solution to combat COVID-19 pandemic.

Objectives:

- To engage unemployed women in livelihood trainings such as tailoring programs, beauty parlor training, tissue paper making and vegetable selling which thereby help improving the economic conditions of women and provide them the opportunities for augmenting their incomes.
- To provide Financial and Digital Literacy training sessions remotely online to women.
- To provide Legal Literacy training sessions to these women
- To promote Mental Health Awareness amongst women
- To create awareness among girls and women regarding issues of Menstrual Hygiene Management amidst lockdown.
- To improve knowledge, attitudes and practices toward adopting safe and hygienic behavior in the light of COVID-19 pandemic.



The interventions
were introduced
at:

1. Ajanthanagar,
2. Vetalbaba
3. Chafekar
Chowk,
4. Rajiv Gandhi
Nagar,
5. Shantinagar
Slum and
6. Hirabai
Langhe Chawl

SAMRUDDHI PROGRAM FOR HOLISTIC DEVELOPMENT

Samruddhi Program for Holistic Development was a John Deere's Corporate Social Responsibility (CSR) initiative to enable solution for world hunger, education and community development. The Centre for Advanced Research & Development (CARD) has been

implementing and coordinating the program with field partners viz. MASHAL, Cohesion Foundation and Labournet.

Vision: Improving socio-economic condition of target community in a sustainable manner

Aim: To improve socio-economic condition of target community by upgrading community infrastructure on water and sanitation, double the farmers' income, ensuring quality education and economic opportunities.

Objectives:

1. Improvement in quality-of-life index through access to safe drinking water and sanitation
2. Increase in productivity of agriculture by 15% per acre and increase in income of farmers by 15-20% per annum
3. Increase in the number of students from government school (schools under the project) pursuing higher education at each level
4. Increase in vocational skills of youth and employability

Implementing Activities:

- I. Pune Urban was not working on the second objective i.e., agriculture. Instead of that, 65% of the total budget was spent on the third objective.
- II. In the 3rd objective, a total of 15 teachers had been appointed to run support classes for students belonging to the age group 6 to 16 years and those who were in the 10th standard from the six slum of the project area. Computer teachers were appointed for teaching basic computer skills. Additional teachers were appointed in government school for improving English and Mathematics.
- III. New interventions that would increase the involvement of community people and capacity building to maintain renovated infrastructure under the project were introduced:
 1. Formation of sanitation committees
 2. Capacity building programs of sanitation committees
 3. Awareness camp on health and hygiene
 4. Initiatives related to the maintenance of community toilets
- IV. Non formal and extra curriculum activities, Science in Action, Scholarship Support to Potential Students, Value Education Awareness, formation of Computer Literacy Committee, Basic Computer Learning Training for Field Animators, Education Kits Support Class Library self-study techniques' improvement program, Career Guidance Session, Personal Hygiene Program, Life Skill Training for Adolescent Girls etc. were also implemented.
- V. Candidates from slums were enrolled for the vocational courses such as beauty parlor, retail sales associates, tailoring, tally and GST, office assistant, computer hardware and networking, four-wheeler driving training etc.



Four Wheeler Driving Training
and
Computer Hardware Training

HAQDARSHAK EMPOWERMENT SOLUTIONS PVT. LTD. (HESPL)

HESPL is a social enterprise working to make welfare schemes more accessible to citizens by creating a multi-state, multi-lingual, cloud-based, mobile technology platform that helps citizens discover, apply for, and benefit from various government and private schemes that they qualify for. It is the first ever enterprise to digitize welfare schemes and provide application support to beneficiaries of these schemes in low-income areas in both rural and urban communities.

Aim: To train young people to become appropriate facilitators in their communities.

Objectives:

1. To train the trained cadres to support citizens to discover their eligible schemes
2. To provide last-mile support in accessing the benefits

Methodology:

1. MASHAL selected 15 youths based out of Pune metropolitan region to be trained as Haqdarshaks.
2. HESPL trained the field cadres selected by MASHAL

The expected revenue generation has to be worked out to make the project sustainable.

PMAY-G (PRADHAN MANTRI AWAS YOJANA - GRAMIN)

This project was done for INHAF. Five Gram Panchayats (GPs) along with seventy five households (5 villages × 5 houses per program i.e. PMAY-G, State and Self-initiated) were surveyed. The intent of this survey was to collect information on the localization of rural housing.

Sr. No.	Village/ GP Names	PMAY (No. of houses)	State Housing Scheme (No. of houses)	Self-Built (No. of houses)	Total Number of Houses
1	Wakhari	4	5	6	15
2	Velapur	5	6	4	15
3	Sarati	5	7	3	15
4	Barad	5	6	4	15
5	Anthurne	4	6	5	15
6	Grand Total	23	30	22	75

Objectives:

2. To understand the value addition (adequacy, satisfaction levels and perception) of PMAY-G, State, and self-initiated housing in terms of unit, process, delivery system, social aspects for people.
3. To examine the systemic reasons that makes a rural housing program better or worse (socio-economic impacts due to delivery, governance, design of a program).

The documentation of the houses and the settlements was done through observations, formal and informal discussion, photos, and sketches. Parivartan Socio-economical Services was appointed as a consultant for conducting the field work.

EMPOWERMENT OF TRANSGENDER POPULATION

MASHAL anchored this project in association of Global Rights Foundation and Giving Circle. Global Rights Foundation works towards rehabilitation of transgender persons in Thane District with following objectives:

1. Increasing awareness and sensitivity towards transgender among general public (through events, social media campaigns and websites)
2. Raising funds for a pre-decided program (e.g. shelter home, counseling center, clinic etc.) from general public, corporates and foundations.

Digital assets such as website, LinkdIn, YouTube, Instagram and facebook were created with a domain of 'I Am Trans'.

Functional community kitchen
was started in Ulhasnagar in
association with Khaana
Chahiye



Skill development workshops for rickshaw driving, beautician and computer basics were also conducted in association of Vatsalya Trust.

INTERNSHIPS

MASHAL offers internship programs for students where they were assigned various tasks such as writing proposals, collecting data from field visits and its analysis, writing reports etc. Students from varied colleges and universities join MASHAL to carry out their internships

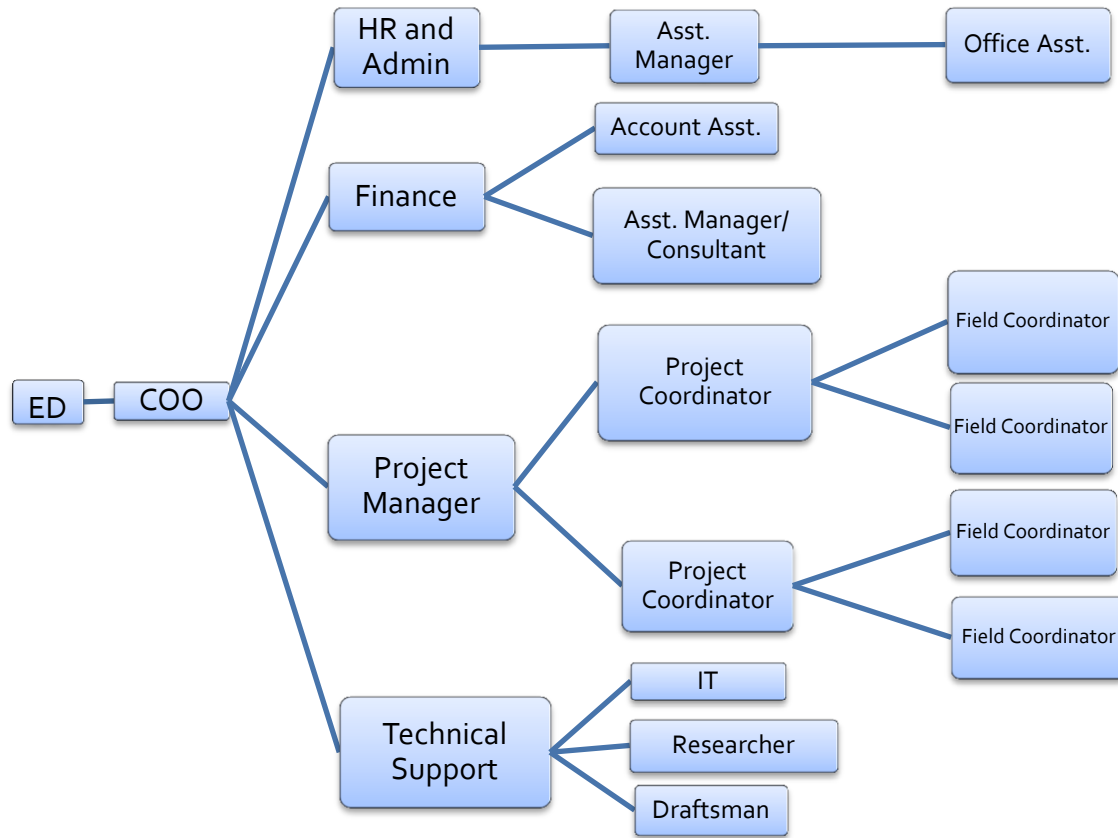
Programs offered for internship are action oriented research such as -

- Slum Atlas
- Poverty Mapping
- Affordable Housing
- Smart City Book
- Slum Sanitation Project
- Urban and Regional Planning
- Socio-economic Surveys
- Infrastructure Development
- Groundwater Data Collection
- Environmental and Management Services
- Pradhan Mantri Awas Yojana
- Social Services Schemes such as AADHAR, PDS
- Community Development
- Capacity Building and Provision of Technical Services

Interns join MASHAL from institutes such as -

- University of Edinburgh
- American University Alliance for Global Education
- Jindal School of International Affairs
- IIT Mumbai
- Fergusson College, Pune
- Emory College of Arts & Sciences Business & Economics, Management, Atlanta, USA
- Tata Institute of Social Sciences (TISS)
- ILS Law College, Pune
- Aayojan School of Architecture and Design, Pune
- Priyadarshni Institute of Architecture and Design Studies, Nagpur
- School of Planning and architecture, New Delhi
- College of Engineering, Pune
- Symbiosis Law School, Pune

Organogram/ Organizational Structure



Governing Council Members

Sr. No.	Name	Designation
1	Ms. Neeta Pawar-Chalke	President
2	Mr. Shanker Ramanathan	Treasurer
3	Mr. Deepak Visvanathan	Executive Director
4	Dr. Suhas Palshikar	Member
5	Prof. Vidyadhar Phatak	Member
6	Prof. Banashree Banerjee	Member
7	Mr. Suhas Lunkad	Member
8	Mr. Vinayak Parab	Member
9	Dr. Shirish Prayag	Member
10	Mr. Nilesh Kulkarni	Member

INTERNAL AUDIT REPORT



Balance Sheet of the year April 2021-March 2022 will be available on request

OBITUARIES

Mr. Ashok Kulkarni

The ability to compartmentalize the life is a maxim that Ashok Kulkarni followed with much ease. His formative years in Belgaum remained central in the choices he made in life and the passion he pursued. In him, MASHAL found its strongest pillar of strength. He preferred to stay behind the scenes but his influence on all aspects of the organization's systems and progress left a lasting imprint. Mentorship came easily to him and so did the quality of foresight. Both these traits hoisted him high among budding artists and development professionals. His genuineness, approachable persona and wisdom will be missed acutely.

As a Vice President of MASHAL, he steered the organization through its most difficult period. The Governing Council members and Staff salute him for the selfless service he offered to MASHAL.

Mr. Sharad Mahajan

Few professionals can proudly boast of having achieved success at parallel careers. Sharad Mahajan was one of them. The rich portfolio of MASHAL can be credited to his tireless efforts at bringing learning and experience he had as an architect planner to the development sector. He gave himself selflessly. His sensitivity towards inclusiveness was immense and he gave of himself tirelessly. He ensured that the voices of the marginalized were heard and respected through the participatory processes that were embedded in all the projects executed by MASHAL. Team Building/teamwork was his forte and his multi-faceted personality combined with multiple talents enlarged the "good friends of MASHAL" cluster.

No adjective is good enough to describe him and no obituary can sufficiently describe the loss that we have experienced due to his sudden departure. The Governing Council members and Staff vouch to keep his memory alive through consistent efforts at raising the bar of MASHAL's activities. That will remain our true homage to him.

Press Releases

परवडणाच्या घरांसाठी अडथळांच्याची शर्यत

परवडणाच्या घरांसाठी अडथळांच्याची शर्यत. महाराष्ट्रचे अर्थमंत्री अशोक चव्हाण यांनी परवडणाच्या घरांसाठी अडथळांच्याची शर्यत सुरुवात केली आहे. यावेळी परवडणाच्या घरांसाठी अडथळांच्याची शर्यत सुरुवात केली आहे. यावेळी परवडणाच्या घरांसाठी अडथळांच्याची शर्यत सुरुवात केली आहे.

झोपडपट्टी योजनेतील घरे विकू नये : पाठक

महाराष्ट्र सरकारच्या झोपडपट्टी योजनेतील घरे विकू नये, असा निर्देश देण्यात आला आहे. यावेळी झोपडपट्टी योजनेतील घरे विकू नये, असा निर्देश देण्यात आला आहे.

४८६ झोपडपट्ट्यांचे होणार ड्रोनद्वारे सर्वेक्षण

महाराष्ट्र सरकारच्या झोपडपट्टी योजनेतील ४८६ झोपडपट्ट्यांचे ड्रोनद्वारे सर्वेक्षण होणार आहे. यावेळी झोपडपट्टी योजनेतील ४८६ झोपडपट्ट्यांचे ड्रोनद्वारे सर्वेक्षण होणार आहे.

NGO comes up with unique slum atlas

NGO comes up with unique slum atlas. A unique slum atlas has been developed by an NGO to help in the identification and mapping of slums in Maharashtra.

नागपूर चाळ व गांधीनगरला घरकुल योजना

नागपूर चाळ व गांधीनगरला घरकुल योजना. The Government has announced a housing scheme for the Chawl and Gandhi Nagar areas of Nagpur.

स्मार्ट सिटी प्रकल्पाबाबत ६२ टक्के पुणेकर अनभिज्ञ

स्मार्ट सिटी प्रकल्पाबाबत ६२ टक्के पुणेकर अनभिज्ञ. A survey conducted in Pune revealed that 62% of the population is unaware of the Smart City project.

पुणे

पुणे. A photograph showing a large gathering of people in Pune, possibly related to a social housing project.

नकाशातून मिळेल झोपडपट्ट्यांची सर्वेक्षण माहिती

नकाशातून मिळेल झोपडपट्ट्यांची सर्वेक्षण माहिती. Information regarding the mapping of slums in Pune is available through a map.

32.5 pc population of city lives in slums

32.5 pc population of city lives in slums. A report states that 32.5% of the city's population lives in slums.

केंसलरी

केंसलरी. A photograph showing a group of people, possibly a community meeting or a protest.

आर्थिक सक्षमतेचे 'मांडे' मनात नव्हे, प्रत्यक्षात!

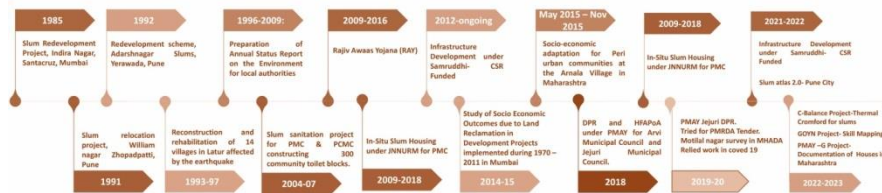
आर्थिक सक्षमतेचे 'मांडे' मनात नव्हे, प्रत्यक्षात! A report highlights the economic challenges faced by the population.

'मशाल' मुळे मिळाला रोजगार आणि आत्मसन्मानही

'मशाल' मुळे मिळाला रोजगार आणि आत्मसन्मानही. The MASHAL project has provided employment and self-respect to the community.

ABOUT MASHAL

MASHAL is a Pune based NGO established in 1985. It focuses on addressing issues especially of urban and rural poor communities primarily in areas of housing, living environment, livelihood and quality of life. MASHAL's area of expertise includes social economic survey, poverty mapping, community development programs, urban and regional planning, environmental and management services, capacity building and provision of technical services to various pro-poor development projects. It is to be noted that MASHAL aims at the concept of 'Public Ownership' and will be focusing on the same in its future endeavors.



Earthquake affected people rehabilitated in new pakka house



Area sabha to identify beneficiaries



The Chief minister of maharashtra launched the slum Atlas Pune

Our vision is to develop communities through public participation

Our mission is to provide adequate shelter and a healthy living environment with access to services as a basic human right